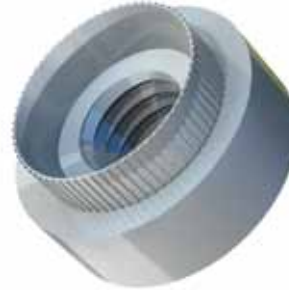
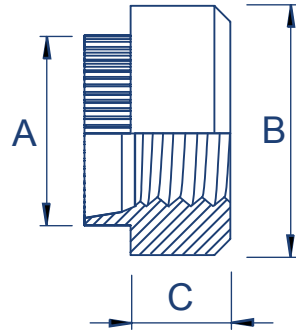
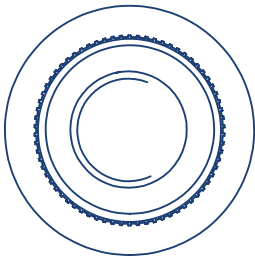


TR FASTENINGS

Euro Rivet Bush (ERB)



Steel/Zinc & Clear (CR3) | Steel/Self Finish (SF)



Metric Dimensions

Thread form		M3	M4	M5	M6	M8
Diameter of spigot +0.00 -0.13mm	A	5.85	6.90	8.30	9.60	13.05
Diameter of body ± 0.15 mm	B	7.92	9.52	11.10	12.70	15.87
Depth of body ± 0.13 mm	C	3.17	3.81	4.45	5.72	6.35
Recommended hole size +0.10 -0.0mm		5.90	6.95	8.35	9.65	13.10

Preferred Range

Thread (d)		M3	M4	M5	M6	M8
Sheet Thickness	0.9 - 1.0	ST	ST	ST	ST	
	1.1 - 1.3	ST	ST	ST	ST	
	1.4 - 1.6	ST	ST	ST	ST	ST
	2.0 - 2.2	ST	ST	ST	ST	ST
	2.3 - 2.5			ST	ST	ST
	2.9 - 3.1			ST		ST

ST - Steel